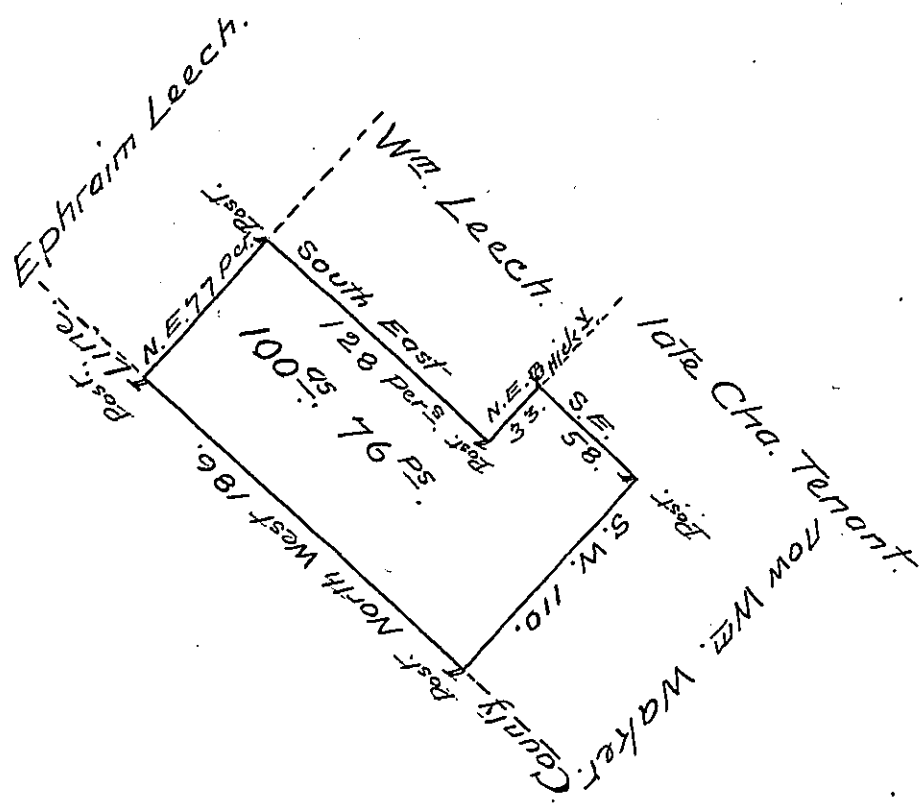


FORM No. 1.



Ephraim Leech begins at a post in the line divid<sup>g</sup>  
 the Counties of Philada<sup>a</sup> & Bucks thence extending by  
 the same North West 186 perches to a post a Corner  
 of said Leech's other Land Thence by the same North  
 East 77 perches to a post a Corner of William Leech's  
 Land Thence by the same South East 128 perches to  
 a post & North East 33 perches to a Hickery a Corner  
 of William Wakers Land Thence by the same South  
 East 58 perches & South West 110 perches to the place  
 of Beginning Containing one hundred acres & 76  
 perches

Edw<sup>d</sup> Scull

Warr<sup>t</sup> to accept and Receive the  
 above survey, dated 12 March 1747

IN TESTIMONY that the above is a copy of the original remaining on file in  
 the Department of Internal Affairs of Pennsylvania, made  
 conformably to an Act of Assembly approved the 16th day of  
 February, 1833, I have hereunto set my Hand and caused  
 the Seal of said Department to be affixed at Harrisburg,  
 this fourth day of August 1905.

*Isaac D. Brown*  
 Secretary of Internal Affairs.